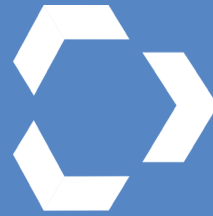


# Welding Cable

Grounds

Leads

Stingers



# LEX

WE DELIVER THE POWER™

## PowerFLEX™ Welding Cable

Extra Flexible Premium Quality Cable  
EPDM Jacket for Maximum Durability  
Made in the USA







# LEX

WE DELIVER THE POWER™





# Lex Products Welding Cable Extensions



## Welding Lead Extensions



### Welding Lead Extensions

Need to add space between you and the welder? Lex Products' Welding Lead Extensions connect to Ground Clamp cables and Stingers to extend the required distance. Made with durability and flexibility in mind, the Lead Extensions are constructed from EPDM jacketed flexible cable to allow for rugged use that is resistant to abrasion, cut, tear, flame, grease, oil and water. The product is available with Lenco LC-40 devices for a secure connection.

- Meets SAE J1127 to ensure proper stranding for the application and tested for flexibility, cold, fluid resistance, exposure to heat and flame
- NEC article 630 electric welders
- RoHS Compliant
- VW-1 Flame Test as per UL2556
- Made In The USA

PART NUMBER	DESCRIPTION	LENGTH	AMP
PF1/0FP-25-LC40-BLK	EXT 1/0 WC BLK 25'	25 FT	250
PF1/0FP-50-LC40-BLK	EXT 1/0 WC BLK 50'	50 FT	350
PF1/0FP-100-LC40-BLK	EXT 1/0 WC BLK 100'	100 FT	200
PF2/0FP-25-LC40-BLK	EXT 2/0 WC BLK 25'	25 FT	250
PF2/0FP-50-LC40-BLK	EXT 2/0 WC BLK 50'	50 FT	400
PF2/0FP-100-LC40-BLK	EXT 2/0 WC BLK 100'	100 FT	200

**Construction**  
30 gauge copper  
stranding for flexibility

**Insulation**  
Durable EPDM jacket  
for rugged use

**Temp Range**  
-50 °C to +105 °C  
(-58 °F to +221 °F)  
Rated to 600 Volts



**Welding Lead Extensions give you the flexibility to get to the point of weld without having to adjust where the welder is located.**

# Lex Products Welding Cable Extensions

**PowerFLEX™**  
Cable Assemblies

## Welding Stinger Extensions

### Welding Stinger (Electrode Holder) Extensions

Achieve maximum conductivity with Lex Products' Welding Stinger Extensions. A secure connection is required for the electrode to work effectively when stick welding. The Lex Products Stinger features a heavy duty spring that holds the electrode firmly in place while fitting comfortably in your hand. The cables are available with Lenco devices and constructed with EPDM jacketed flexible cable that is resistant to harsh environments.

- Meets SAE J1127 to ensure proper stranding for the application and tested for flexibility, cold, fluid resistance, exposure to heat and flame
- NEC article 630 electric welders
- RoHS Compliant
- VW-1 Flame Test as per UL2556
- Made In The USA

#### Device End:

Lenco LC-40 Male

#### Electrode Holder End:

Lenco AF-25

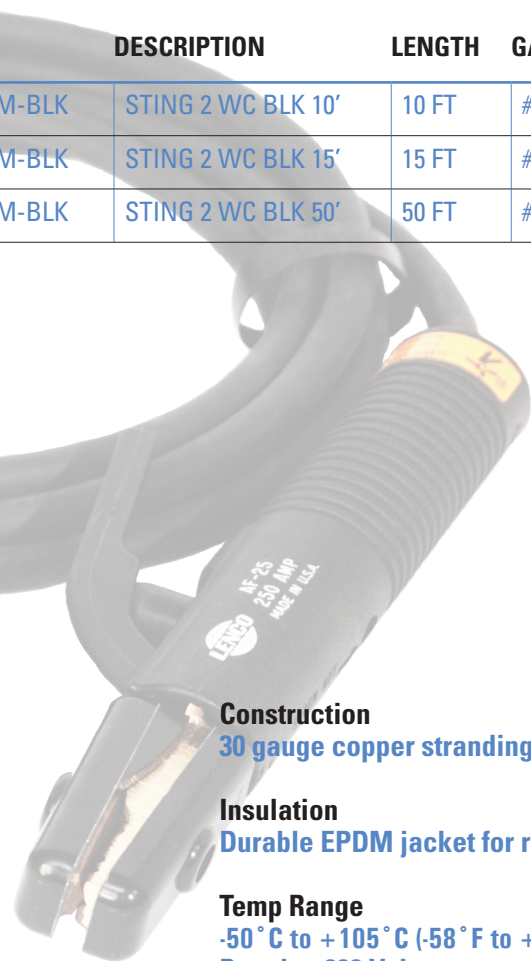
- Medium duty
- Rated for 250A - 300A
- Cable capacity 1/0 - 2/0
- Electrode size - up to 3/6", 8 1/2" length, 16 oz. weight



Meets the OSHA requirement of 10ft or greater for welding stingers

Industry standard 10ft and 15ft available

PART NUMBER	DESCRIPTION	LENGTH	GAUGE
PF2FP-10-AF25-LC40M-BLK	STING 2 WC BLK 10'	10 FT	#2
PF2FP-15-AF25-LC40M-BLK	STING 2 WC BLK 15'	15 FT	#2
PF2FP-50-AF25-LC40M-BLK	STING 2 WC BLK 50'	50 FT	#2



#### Construction

30 gauge copper stranding for flexibility

#### Insulation

Durable EPDM jacket for rugged use

#### Temp Range

-50 °C to +105 °C (-58 °F to +221 °F)  
Rated to 600 Volts



# Lex Products Welding Cable Extensions

**PowerFLEX™**  
Cable Assemblies

## Welding Ground Extensions

### Welding Ground (Work) Extensions

Ensure a better weld by using Lex Products' Welding Ground Extensions. These copper alloy clamps have excellent current carrying ability along with a heavy duty spring that ensures a secure clamp connection. The Ground cable withstands rugged use that is resistant to abrasion, cut, tear, flame, grease, oil and water. The cables are available with Lenco devices for a premium quality product.

- Meets SAE J1127 to ensure proper stranding for the application and tested for flexibility, cold, fluid resistance, exposure to heat and flame
- NEC article 630 electric welders
- RoHS Compliant
- VW-1 Flame Test as per UL2556
- Made In The USA



#### Device End:

Lenco LC-40 Male

#### Clamp End:

Lenco LPG-300

- High Copper Alloy
- Rated for 300A
- Cable capacity 1/0 - 2/0
- Jaw Opening 1 1/2"

PART NUMBER	DESCRIPTION	LENGTH	GAUGE
PF2/0FP-3-LC300-LC40M-BLK	GRD EXT 2/0 WC BLK 3'	3 FT	2/0
PF2/0FP-6-LC300-LC40M-BLK	GRD EXT 2/0 WC BLK 6'	6 FT	2/0
PF2/0FP-50-LC300-LC40M-BLK	GRD EXT 2/0 WC BLK 50'	50 FT	2/0
PF1/0FP-3-LC300-LC40M-BLK	GRD EXT 1/0 WC BLK 3'	3 FT	1/0
PF1/0FP-6-LC300-LC40M-BLK	GRD EXT 1/0 WC BLK 6'	6 FT	1/0
PF1/0FP-50-LC300-LC40M-BLK	GRD EXT 1/0 WC BLK 50'	50 FT	1/0

#### Construction

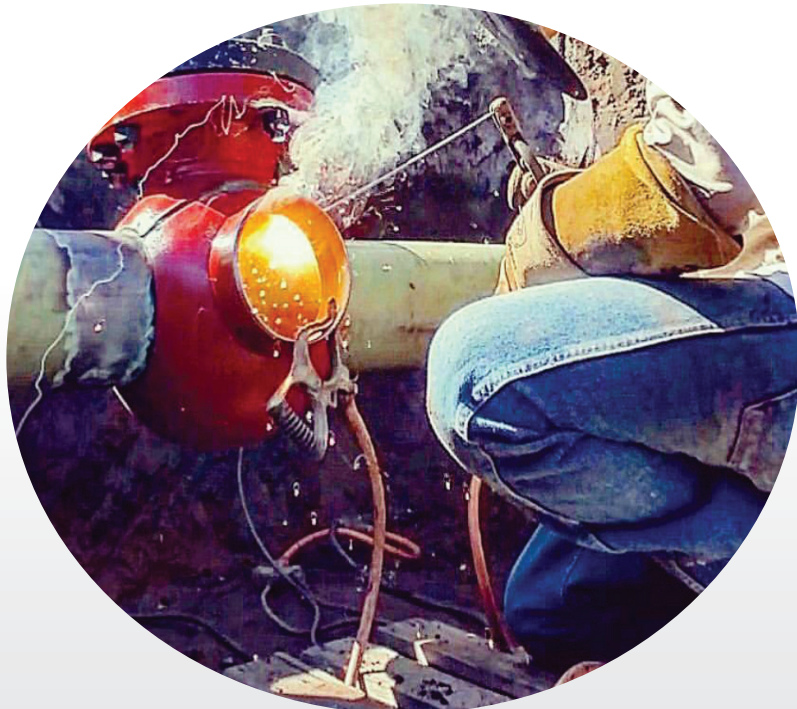
**30 gauge copper stranding for flexibility**

#### Insulation

**Durable EPDM jacket for rugged use**

#### Temp Range

**-50 °C to +105 °C (-58 °F to +221 °F)  
Rated to 600 Volts**



# Lex Products Welding Cable

## Bulk Selection

# Bulk Welding Cable

Designed for all welding applications where a stringer/whip, leads grounds are used.  
Suitable for use in battery applications.

- Meets SAE J1127
- Resists abrasion, cut, tear, flame, grease, oil and water
- National Electrical Code article 630 electric welders
- Rated for 600V
- RoHS Compliant
- Sequentially marked
- VW-1 Flame test as per UL2556
- Suitable for battery cable per UL558 & UL583
- Made in the USA

**Construction**  
Highly flexible Class K 30 guage copper

**Insulation**  
Durable EDPM jacket for rugged use

**Temp Range**  
-50° C to +105° C (-58° F to +221° F)  
Rated to 600 Volts

GAUGE	STRANDING	O.D.	AVG WALL	WEIGHT/1,000 ft.
#8	168/30	.293	.060	81 lbs.
#6	260/30	.303	.060	109 lbs.
#4	364/30	.343	.060	145 lbs.
#2	624/30	.418	.060	235 lbs.
#1	767/30	.488	.080	301 lbs.
1/0	975/30	.533	.080	372 lbs.
2/0	1,196/30	.568	.080	446 lbs.
3/0	1,547/30	.618	.080	565 lbs.
4/0	1,950/30	.688	.080	700 lbs.
250MCM	2,527/30	.810	.095	925 lbs.
350MCM	3,478/30	.932	.095	1,296 lbs.





## Lex Products Welding Cable Suggested Ampacity

AMPS	50'	75'	100'	125'	150'	175'	200'	225'	250'	275'	300'	325'	350'
100	#4	#2	#2	#1	#1	1/0	2/0	2/0	3/0	3/0	3/0	4/0	4/0
150	#2	#2	#1	1/0	2/0	3/0	3/0	4/0	4/0				
200	#2	#1	2/0	3/0	3/0	4/0	4/0						
250	#1	1/0	3/0	4/0	4/0								
300	#1	2/0	3/0	4/0									
350	1/0	3/0	4/0										
400	2/0	3/0											
450	2/0	4/0											
500	3/0	4/0											
550	4/0												
600	4/0												

Lex Products LLC assumes no liability for the information provided on this page. NOTE: Specifications subject to change




# LEX

## WHY LEX PRODUCTS

# LEX PRODUCTS HAS DESIGNED PRODUCTS TO THRIVE IN HARSH PORTABLE ENVIRONMENTS

- Manufacturing and Stocking Facilities Across U.S.
- Pioneered Use of Rubber Enclosures
- Markets Served Include Industrial, Entertainment & Military
- ISO 9001:2015 Certification
- AS9100:2016 Rev. D
- Diverse Patent Portfolio
- Custom Engineered Solutions
- Vertically Integrated Products

800-643-4460  
LEXPRODUCTS.COM

### Lex Headquarters

15 Progress Drive  
Shelton, CT 06484

### Lex West

12701 Van Nuys Blvd  
Suite Q  
Pacoima, CA 91331

### Lex South

15751 SW 41 Street, Suite 300  
Davie, FL 33331

## INDUSTRIAL PRODUCT LINE CARD

### PowerHOUSE™

Portable Distribution Boxes



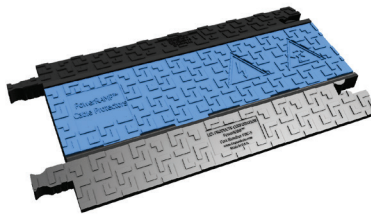
### PowerFLEX™

Cable Assemblies



### PowerRAMP®

Cable Protectors



### LuxCommander®

Portable Work Lights



### PowerGATE®

Switches & Panels



## WHERE TO USE LEX PRODUCTS

- Generator Rental Market
- Construction Sites
- Industrial Maintenance & Repair
- Shipbuilding & Repair
- Pest Control
- Disaster Relief
- Restoration
- Outdoor Events
- Sporting Events

We Deliver The Power