



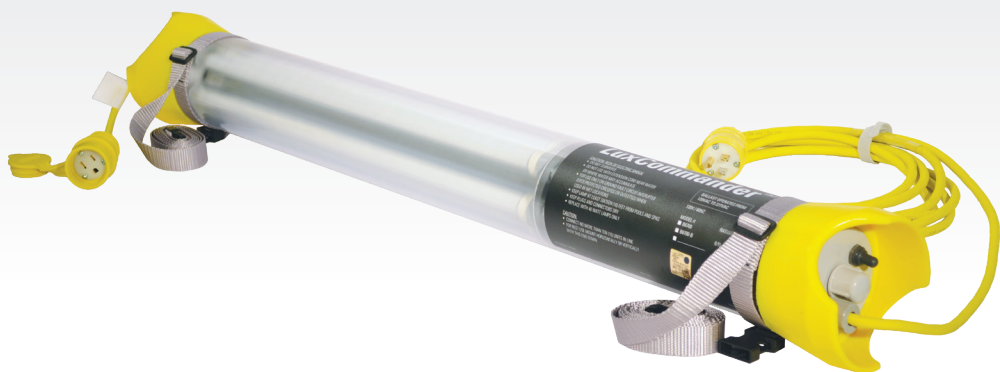
# Portable Work Lights

# LuxCommander®

User Manual

(Models B3700, B6700 & B7700)

**LEX**  
We Deliver the Power™



# Introduction

Designed for use in harsh environments, the Lex Products LuxCommander® Portable Work Light delivers three times more light output than conventional fluorescent worklights for a brighter and safer worksite. This user manual reviews information critical to the proper operation of the LuxCommander®. Please take time to review all precautions and warnings in the manual prior to use. Store this manual in a safe location for future reference.

## Unpacking and Inspection

Before you begin your installation check the shipment carefully to confirm it arrived complete and undamaged.

1. Check the contents against the packing list to ensure the device is the correct model.
2. Check the unit for loose or broken components, which might have resulted from shipping.
3. Inspect for signs of damage to wiring devices, cords or fixture shell.

If there is any damage to the LuxCommander® Portable Work Light, contact Lex Products toll free at (855) 539-1002 or email [support@lexproducts.com](mailto:support@lexproducts.com).

## LuxCommander® Components (Typical)

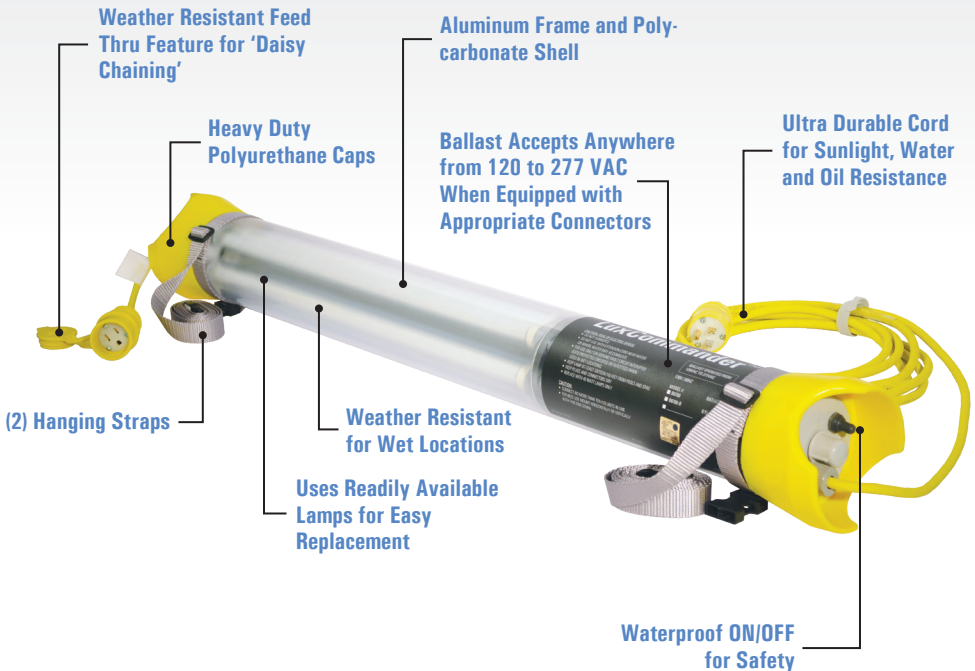


Fig. 1

# Setting Up the LuxCommander®

## Important Safety Precautions

When using the LuxCommander® Portable Work Light, basic safety precautions should always be followed to reduce the risk of fire, electric shock, and personal injury. These precautions include:

- A. Use only three-wire outdoor extension cords that have three-prong grounding plugs and grounding connectors that accept the LuxCommander's® plug.
  - i. The LuxCommander® features a polarized plug to reduce the risk of electrical shock.
- B. Ground Fault Circuit Interrupter (GFCI) protection is to be provided where the LuxCommander® is used in wet or potentially wet locations. Industry-standard receptacles are available with built-in GFCI protection to provide this measure of safety.
- C. Use only with an extension cord for outdoor use, such as those that use either cord type SW, SW-A, SOW, SOW-A, STW, STW-A, STOW, STOW-A, SJW, SJW-A, SJOW, SJOW-A, SJTW, SJTW-A, or SJTOW, SJTOW.
- D. Do not use in hazardous atmospheres or locations where a spark might lead to ignition or explosion.
- E. Use work light in a horizontal or switch-end DOWN position to increase fixture life and prevent overheating.
- F. If hanging fixture vertically, make sure the feed end (with male plug) and ballast are below the feed thru end (with female connector) (See Fig. 2 for incorrect position). Failure to do so can result in overheating and reduce the ballast life.
- G. Do not connect more than 10 lights together on any given string.  
Maximum recommended daisy-chain distance is 200 feet total, not including fixture length.

**NOTE:** The feed thru feature is for connecting lights only, not other power loads.



Fig. 2

## Operating Instructions

### Step 1: Locating the LuxCommander®

- The LuxCommander® is designed to be used in indoor or outdoor locations.
- The fixture must not rest in standing water.
- Suspend LuxCommander® from an appropriate location using the straps provided.

**NOTE:** Do NOT hang the fixture by the power cord.

### Step 2: Making Connections

- If using the feed thru feature, connect the feed thru BEFORE the input connection is made.
- Fully insert the feed-thru extension plug into the LuxCommander® connector tail.
- Fully insert the power connector into the LuxCommander® plug tail.

### Step 3: Powering up the LuxCommander® System

- Best practice dictates that loads are applied gradually the first time a system is set up.
- Turn on the fixture furthest from the power source and work towards it, turning on fixtures as you go.

# Troubleshooting Guide

## Fixture Care

- Replace fluorescent lamps after 20,000 hours of use.
- Replace LED lamps after 40,000 hours of use.
- Clean outside of shell with soap and water as needed (avoid solvents).

## Fixture Maintenance

- Step 1: UNPLUG the light from power to prevent any hazard.
- Step 2: Unscrew the central, plastic nut at the end of the light furthest from the switch.
- Step 3: Pull the flat disc and rubber bumper free from the light. DO NOT disconnect any internal wiring.
- Step 4: Flip the flat disc 90 degrees (see Fig. 3), and then push it through the slots in the bumper. (see Fig. 4)
- Step 5: The bumper can now be removed completely.
- Step 6: Repeat steps 2 through 5 for the other end of the fixture.
- Step 7: Slide the fixture assembly out of the polycarbonate shell.
- Step 8: Lamps are held in place with spring loading.
- Do not use a tool to pry the glass lamp in or out of the holder.
- B3700: Compress both spring-loaded sockets to remove the lamps.
  - B6700/B7700: Pull and tilt the spring-loaded disc away from each lamp as it is removed or installed.



Fig. 3



Fig. 4

## Technical Support

Lex Products is available to help answer any product related inquiries. For any questions or technical advice, please call toll free 855-LEX-1002 (855-539-1002) or email [support@lexproducts.com](mailto:support@lexproducts.com).



Lex Products Corporation  
15 Progress Drive  
Shelton CT 06484  
203.363.3738  
203.363.3742 Fax

Lex West  
12701 Van Nuys Boulevard  
Suite Q  
Pacoima, CA 91331  
818.768.4474  
818.768.4040 Fax

[www.lexproducts.com](http://www.lexproducts.com)  
[info@lexproducts.com](mailto:info@lexproducts.com)  
800.643.4460

© Copyright Lex Products 2019

Produced in the United States of America  
All Rights Reserved.

Lex Products logo and [lexproducts.com](http://lexproducts.com) are trademarks or registered trademarks of Lex Products in the United States, other countries, or both.